

TAR & ASPHALT HOSE

When it comes to temperature-resistance and overall durability, this hose stands with the best.

This hose is built to specifically convey hot tar and asphalt on patching units, tankers, and from container to container. It has good flexibility and is made from high quality hot dip galvanized steel with a durable long lasting packing to prevent leakage.

Southeastern Hose, Inc. builds this exceptional hose for conveying high-temperature/high-pressure liquids.

Southeastern Hose, Inc. can provide you with a full line of N.P.T. fittings for the Heavy Duty Tar & Asphalt Hose.

APPLICATIONS

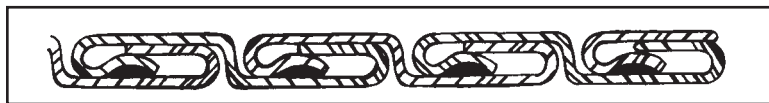
- Industrial
 - Patching Units
 - Tankers
 - Container to Container
- Material Handling
 - Convey Hot Tar
 - Convey Asphalt
 - Convey Any High Temperature / High Pressure Liquids



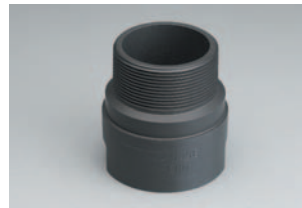
Temperature - Low/High	- 20°F to +450°F
Abrasion - Interior/Exterior	Good/Good
Flexibility	Good
Pressure	Operating 35 psi
Chemical	Excellent
Standard Length	15', 30' and 60'
Size - ID	3" ID

TAR & ASPHALT HOSE

I.D. (in.)	Part No.	Min. Coiling Diameter (in.)	Hose Weight	Male Fitting Part No.	Female Fitting Part No.
3.00	12585	25.00	2.83	18878	18879



Close-up of Hose Packing



Male Fitting Tar/Asphalt Heavy Duty

Description - Connect between Patching unit and tanker. For use conveying hot tar and asphalt/high pressure liquids.



Female Fitting Tar/Asphalt Heavy Duty

Description - Connect between Patching unit and tanker. For use conveying hot tar and asphalt/high pressure liquids.

Southeastern Hose, Inc.
P.O. Box 575
506 Sangamore Road
Bremen, Georgia 30110

24-Hour Emergency Service
800-241-4818
770.537.5571
770.537.5573/fax

info@sehose.com - www.sehose.com